

HIGH CURRENT POWER INDUCTORS / THT TYPE

FEATURES

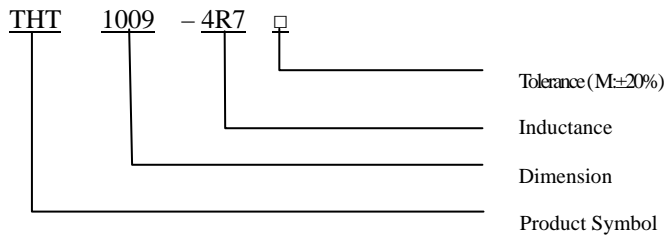
- ◆ High current
- ◆ High energy storage and low DCR.



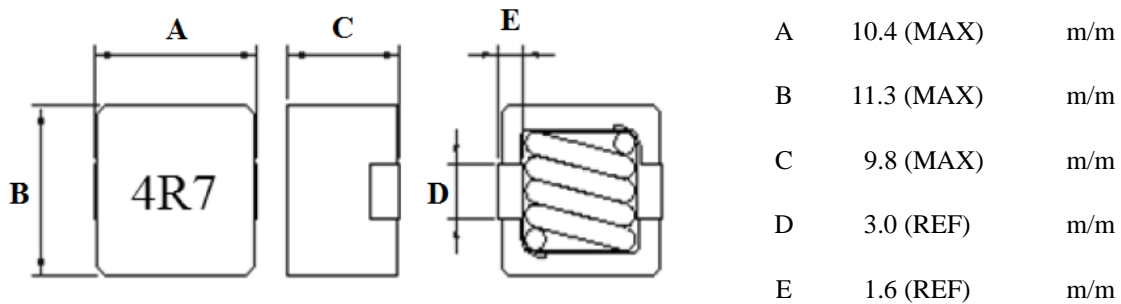
APPLICATIONS

- ◆ PDA / Notebook / Desktop, and server applications.
- ◆ DC/DC converters in distributed power systems.
- ◆ DC/DC converter for Field Programmable Gate Array(FPGA).

ORDERING CODE



DIMENSIONS (UNIT: mm)



HIGH CURRENT POWER INDUCTORS / THT TYPE

ELECTRICAL CHARACTERISTICS FOR THT1009

Part No.	Inductance (uH)	Test Frequency	RDC (mΩ) MAX	IDC (A) MAX
THT1009-R22M	0.22	100KHz/0.1V	0.66	58.0
THT1009-R33M	0.33	100KHz/0.1V	0.70	50.0
THT1009-R47M	0.47	100KHz/0.1V	0.88	47.0
THT1009-R68M	0.68	100KHz/0.1V	1.49	34.0
THT1009-R82M	0.82	100KHz/0.1V	1.52	32.0
THT1009-1R0M	1.00	100KHz/0.1V	2.10	27.5
THT1009-1R5M	1.50	100KHz/0.1V	2.75	27.0
THT1009-2R2M	2.20	100KHz/0.1V	4.07	22.0
THT1009-3R3M	3.30	100KHz/0.1V	6.94	15.5
THT1009-4R7M	4.70	100KHz/0.1V	9.02	15.0
THT1009-6R8M	6.80	100KHz/0.1V	14.52	11.0
THT1009-8R2M	8.20	100KHz/0.1V	18.52	9.0
THT1009-100M	10.0	100KHz/0.1V	24.50	7.0

CORE MASTER ENTERPRISE CO., LTD.



<http://www.coremaster.com.tw>